



AS

ARCHITECTURE | INTERIORS | TURNKEYS
(CORPORATE PORTFOLIO)



AS

Ardor is multidiscipline Architectural Studio from Delhi/N.C.R We are an absolute combine team of astute minds whose pragmatic approach is to equip effective as well as creative logical solutions. Ardor was born in 2016 with two young architects, today is.. team of Designers and Civil engineers shaping the way spaces feel around us.



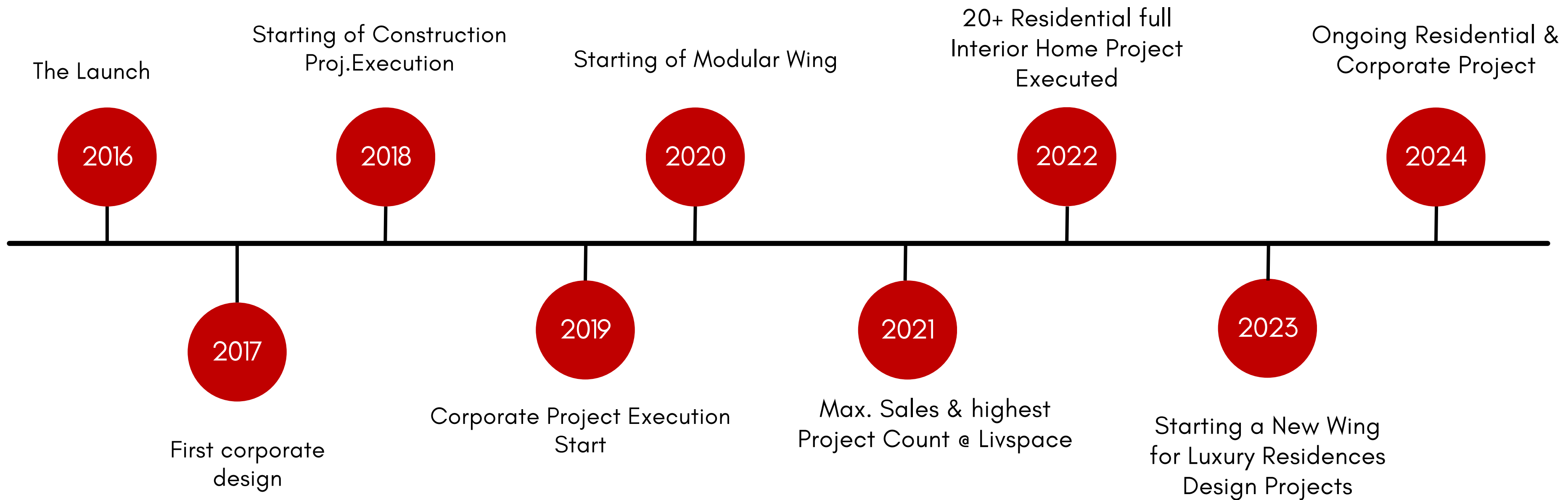
Ar. Sahil Sharma
Founder and CEO

Leadership

A senior Architect turned Entrepreneur in 2016 – Architect Sahil Sharma had been a very Diversified journey so far with the best of experience in the World of Architecture.

Sahil has previously worked with the biggest players of Indian Market. He says “It was my luck to be associated with my dream architects in my early career”. He started his journey by working for Hafeez Contractor and RSP Bombay. Having persuade bachelors from Apeejay School of Architecture and planning, Sahil was his college representative at various national/international platforms in his college days. Was elected President for NASA India, Northern Region in 2012.

TIMELINE



MILESTONE

150+

Project Executed

1.2 MIL

Sq, Ft Area Covered

50+

Team Strength

90%

Repeat Clientele

5+

states covered with
our projects across
India

8+

Year of Excellence

CLIENTS

fairwealth
SECURITIES LIMITED
grow with intelligence

KASHYAPI
INFRASTRUCTURE PVT. LTD.

पावरग्रिड

रेल विकास निगम लिमिटेड
Rail Vikas Nigam Limited

SOBHA

SS GROUP

TECH
mahindra

FLOWMORE
Flow for life

CPWD

HONDA

SANTOSH

Principle Architect
at HONDA CARS PVT. LTD
(Designing of 1,00,000 sqft area in 2023-2024)

Project Architect
at **TECH. MAHINDRA PVT. LTD**
(*Designing of 60,000 sqft area in 2022-2023*)

One of the highest
Project Count at **LIVSPACE**

Offices : Ahmedabad Bangalore Bhubneshwar Chennai Dhanbad Indore Jaipur Jamshedpur Kanpur Kolkata Mumbai Nagpur Patna Raipur Ranchi Secunderabad



Residential



Commercial



Interior



Turn Key

CORE TEAM



Mr. Hari Om Sharma
Advisor



Ar. Ashi Gupta, B.Arch
Project Manager



Vishal Chaudhary, MRICS,
ACiArb, Construction Head



Ar. Kartik Chaudhary, B.Arch
Architect & Interior Designer



Ar. Reenu Sharma,
M.Arch



Ar. Raza, B.Arch, Designer

HANDOVERS



Mr. Sourabh, Area-5000 Sq.Ft., Turn key



Flow more (sahibabad), Area-5000 Sq.Ft., Interior Work



HONDA CARS PVT LTD (greater noida), 1,00,000 SQ. FT



Mr. Hemant (ATS), Area-1680 Sq.Ft., Interior Work



HONDA CARS PVT LTD (greater noida), 1,00,000 SQ. FT



Mr. Mishra (Indirapuram), Area-2830 Sq.Ft., Interior Work



Mr. Tarun (Cleo Country), Area-2200 Sq.Ft., Interior Work



INDEX

Name of Client (Commercial)	Year
Tech Mahindra	2022-2023
Santosh Medical	2023
Flow More	2022-2023
CPWD	2022-2023
Vista bay	2020-2021
Honda Admin	working on
Honda R&D	Working on



TECH MAHINDRA



FUNCTIONAL FITNESS



FLOW MORE



HONDA CORPORATE

Project Type-COMMERCIAL
Area -8,000 SQFT
Scope - Design and build
Timeline -90 Working days
Location - GHAZIABAD

FUNCTIONAL FITNESS



Project Type-COMMERCIAL

Area -8,000 SQFT

Scope - Design and build

Timeline -90 Working days

Location - GHAZIABAD

FUNCTIONAL FITNESS



Project Type-COMMERCIAL

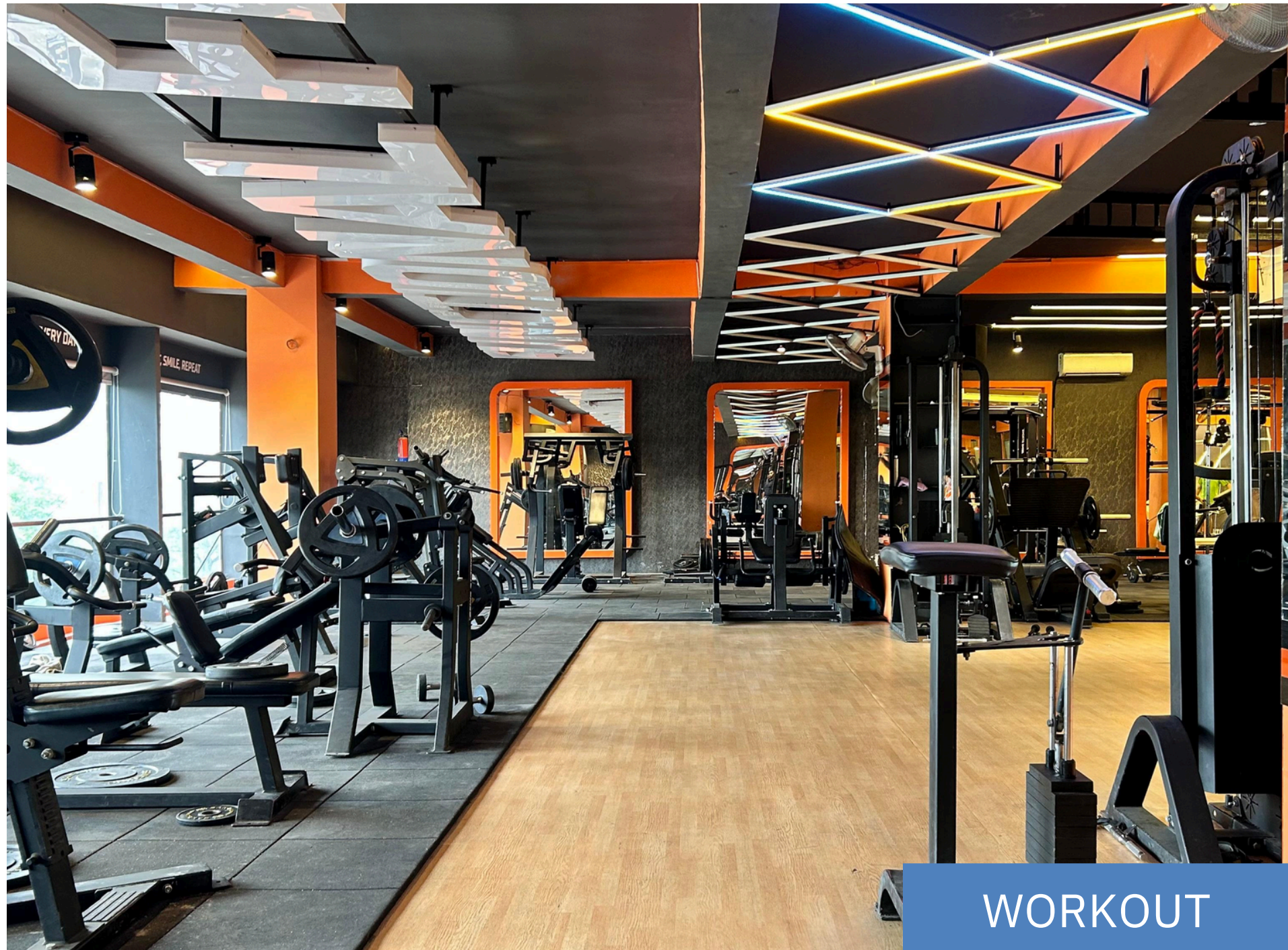
Area -8,000 SQFT

Scope - Design and build

Timeline -90 Working days

Location - GHAZIABAD

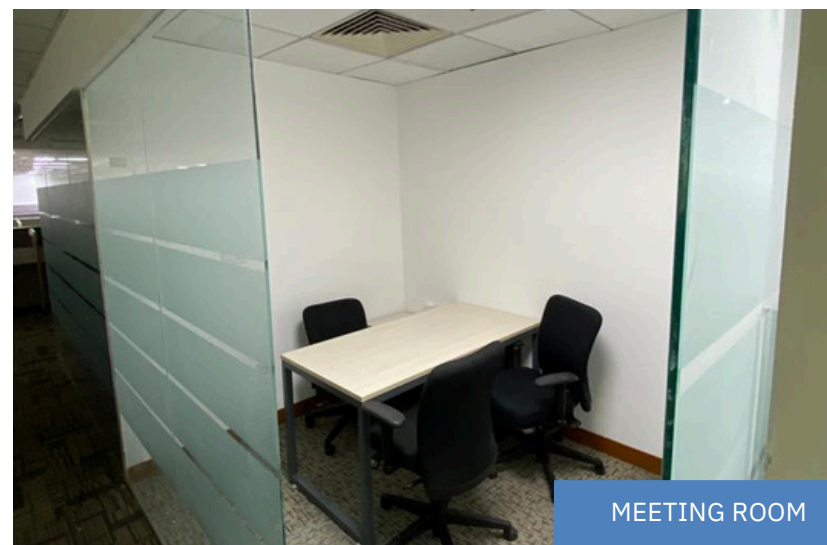
FUNCTIONAL FITNESS



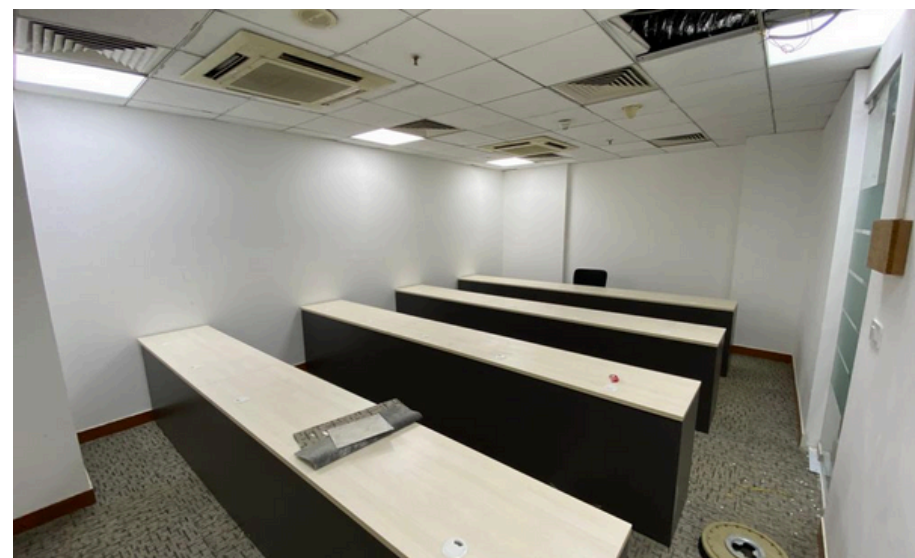
Project Type-CORPORATE
Area -60,000 SQFT
Scope - Design and build
Timeline -90 Working days
Location - Noida



WORK STATIONS



MEETING ROOM



TRAINING ROOM

Project Type-CORPORATE

Area -60,000 SQFT

Scope - Design and build

Timeline -90 Working days

Location - Noida



WORK STATIONS



MEETING ROOM



WORK STATIONS

Project Type-CORPORATE

Area -1500 SQFT

Scope - Design and build

Timeline -90 Working days

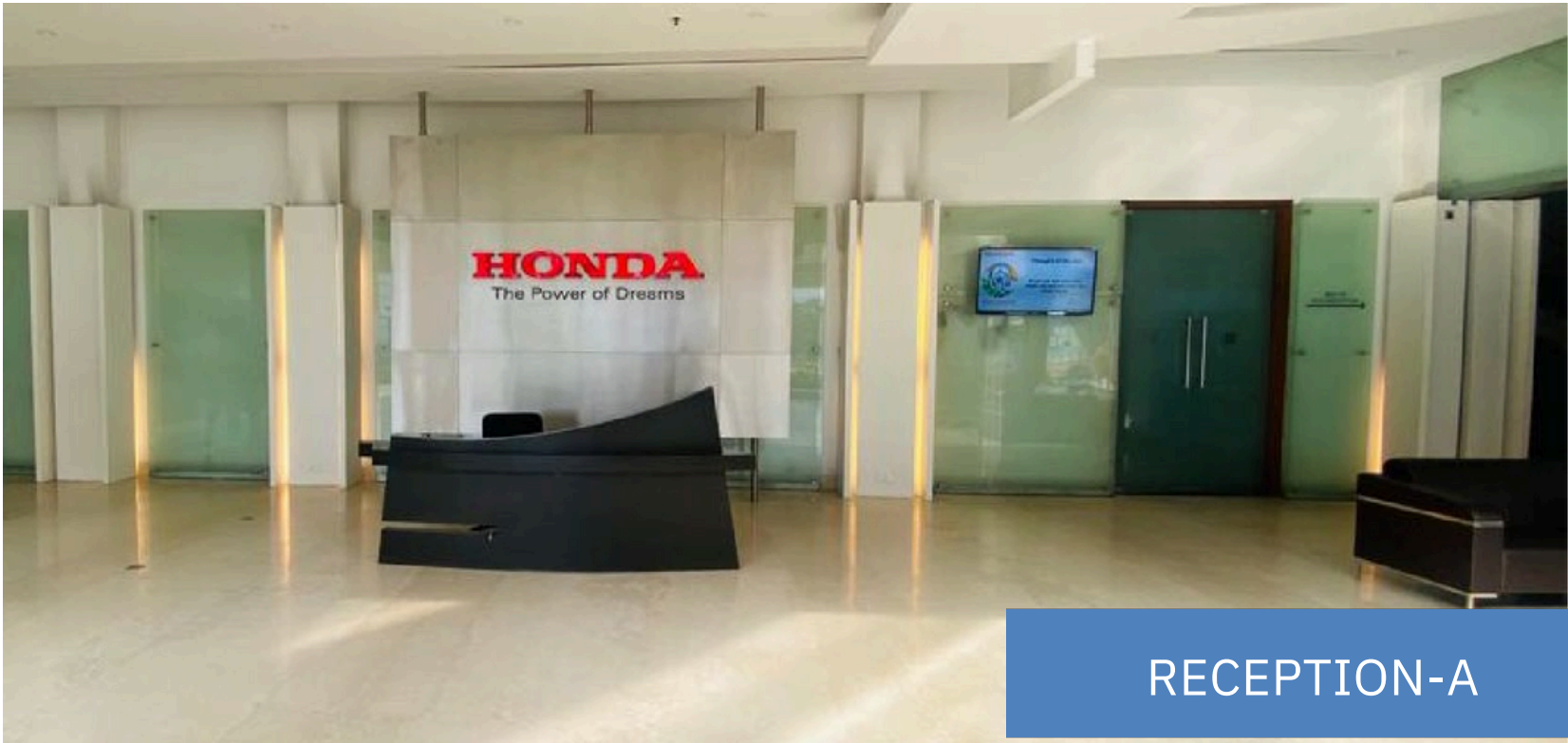
Location - Vashundhra



Project Type-CORPORATE
Area -1500 SQFT
Scope - Design and build
Timeline -90 Working days
Location - Vashundhra



Project Type-CORPORATE
Area -1,00,000 SQFT
Scope - Design and build
Timeline -90 Working days
Location - Noida



RECEPTION-A



RECEPTION-A



RECEPTION-A 3Ds



RECEPTION-A 3Ds

Project Type-CORPORATE
Area -1,00,000 SQFT
Scope - Design and build
Timeline -90 Working days
Location - Noida

HONDA-CORPORATE OFFICE



RECEPTION-A 3Ds



EXTERNAL WASHROOM

Project Type-CORPORATE
Area -1,00,000 SQFT
Scope - Design and build
Timeline -90 Working days
Location - Noida



HONDA-CORPORATE OFFICE



Project Type—CORPORATE

Area —4,000 SQFT

Scope — Design and build

Timeline —on going

Location — Noida

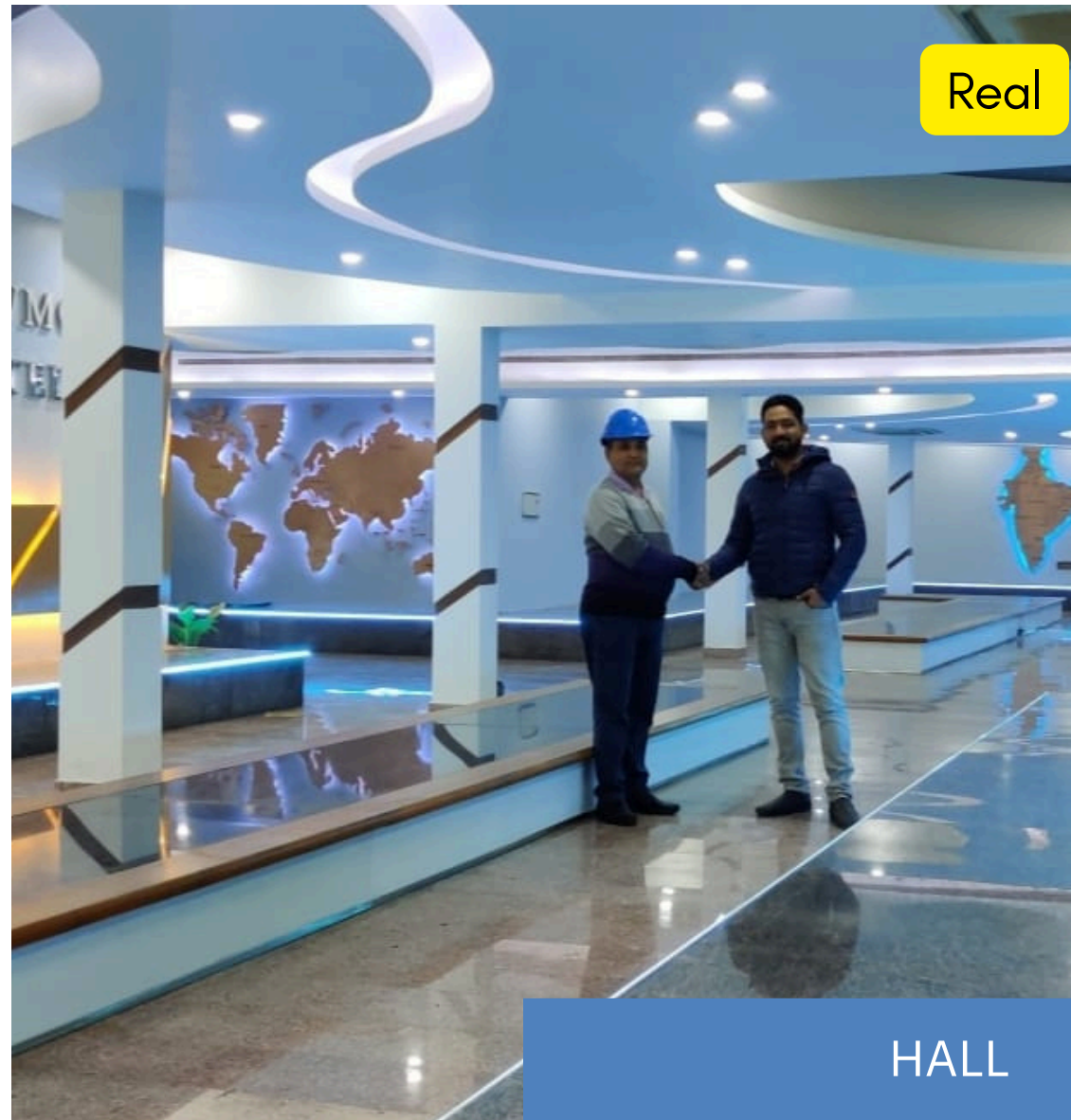


RECEPTION-B



RECEPTION-B 3D

Project Type–Commercial
Area –5,000 SQFT
Scope – Design and build
Timeline –180 days
Location – sahibabad



Project Type–Commercial
Area –5,000 SQFT
Scope – Design and build
Timeline –180 days
Location – sahibabad

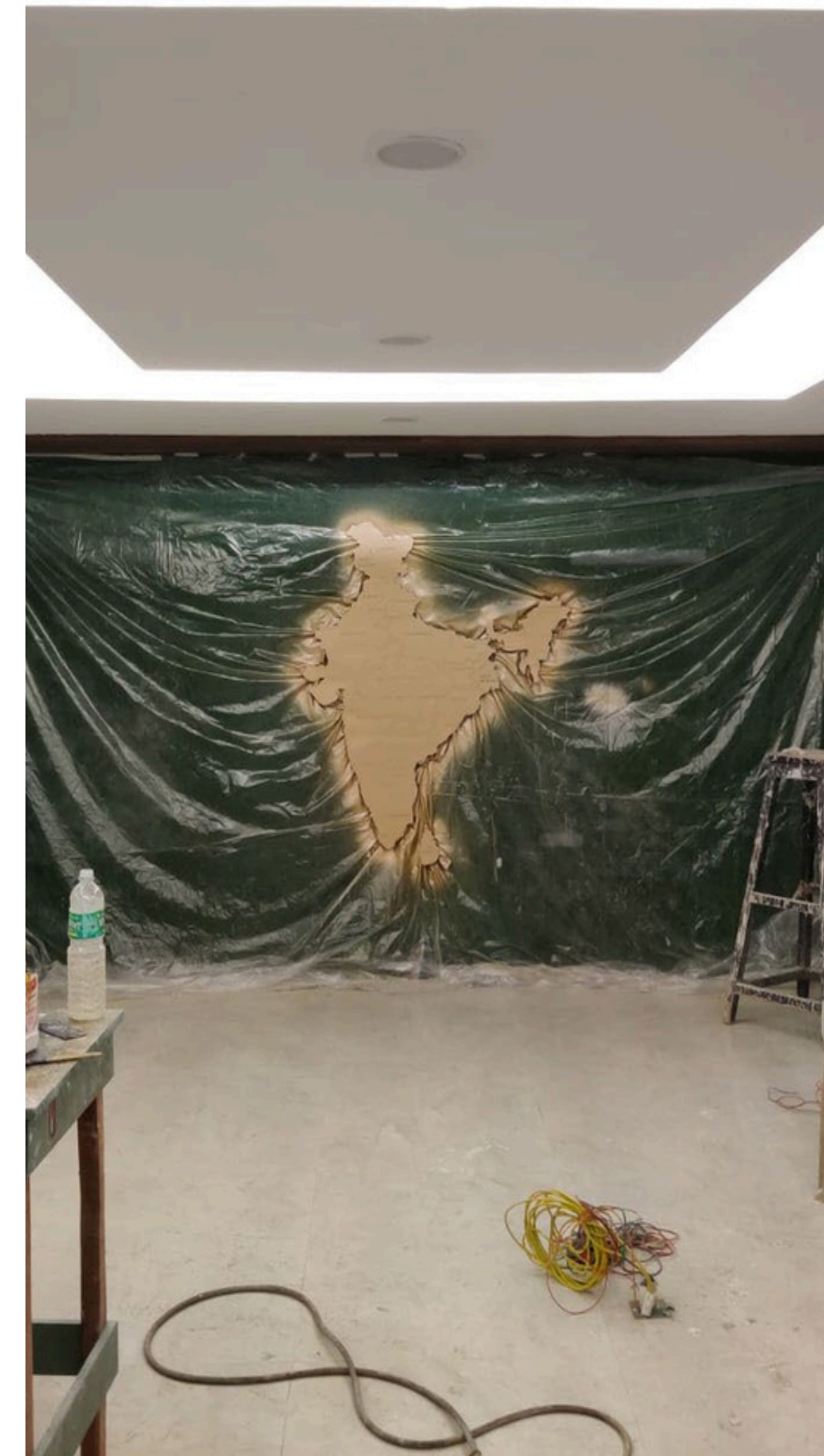


Project Type - Govt project
Area -2,200 SQFT
Scope - Design and build
Timeline -75 days
Location - Ghaziabad



C.P.W.D

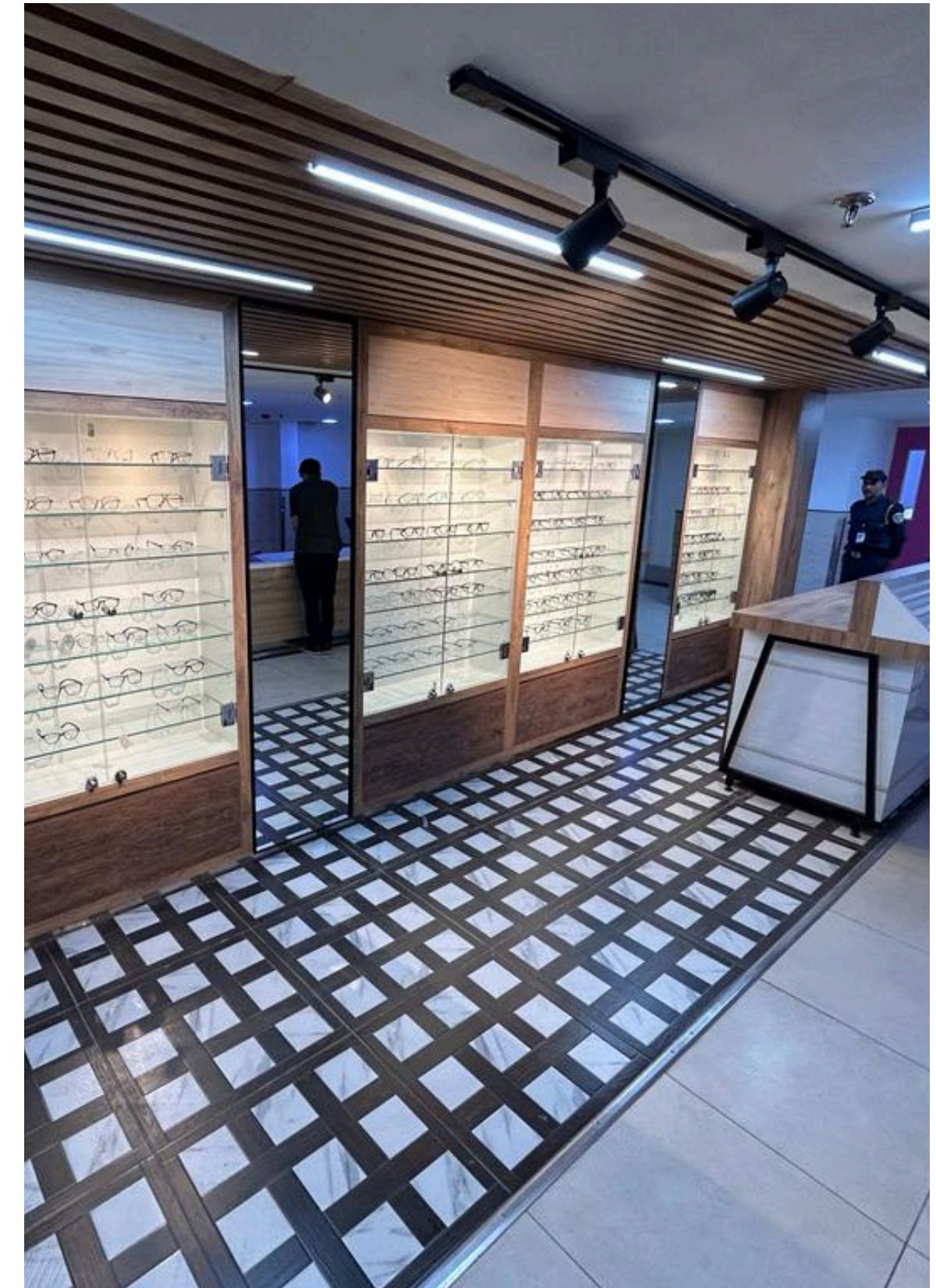
Project Type - Govt project
Area -2,200 SQFT
Scope - Design
Timeline -75 days
Location - Ghaziabad



Project Type - commercial
Area -400 SQFT
Scope - Design
Timeline -30 days
Location - Ghaziabad



Project Type - commercial
Area -400 SQFT
Scope - Design
Timeline -30 days
Location - Ghaziabad

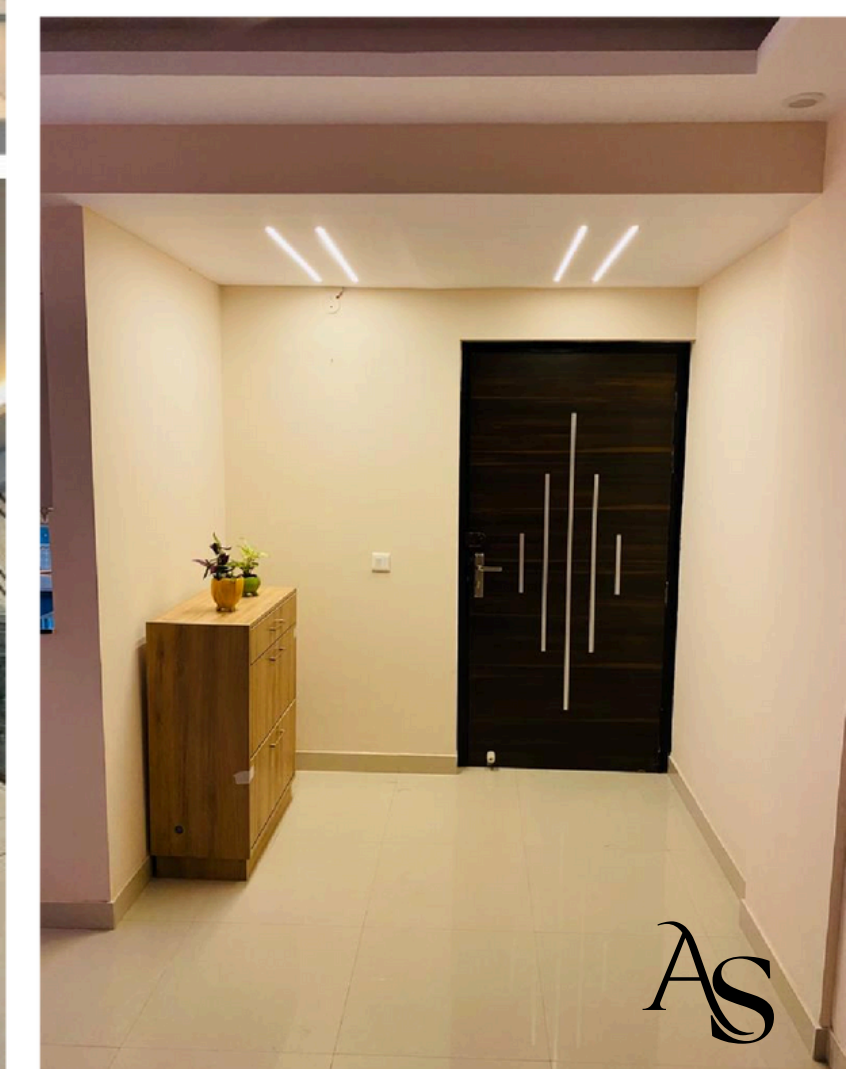
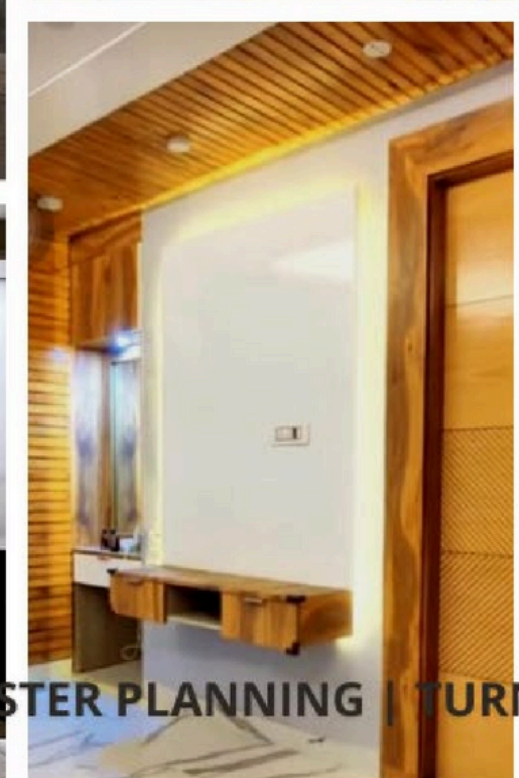
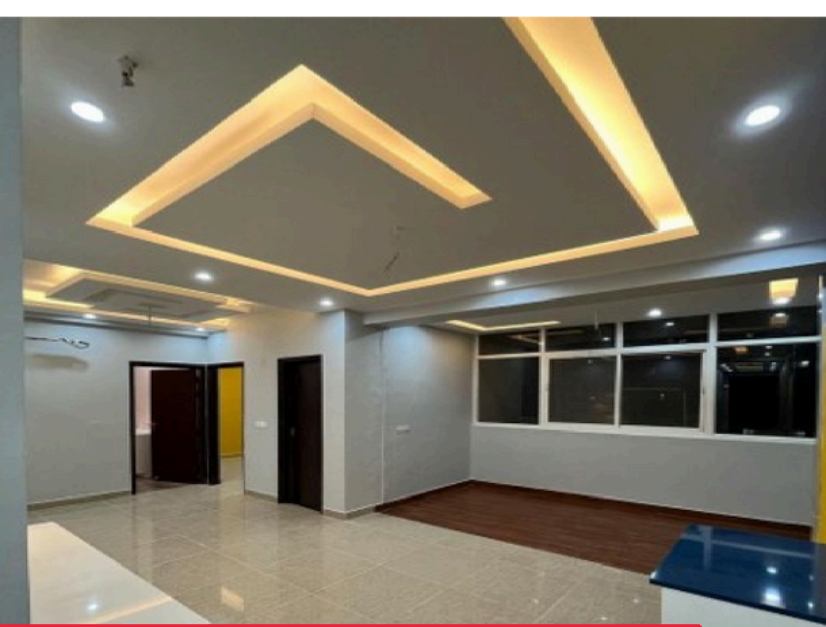
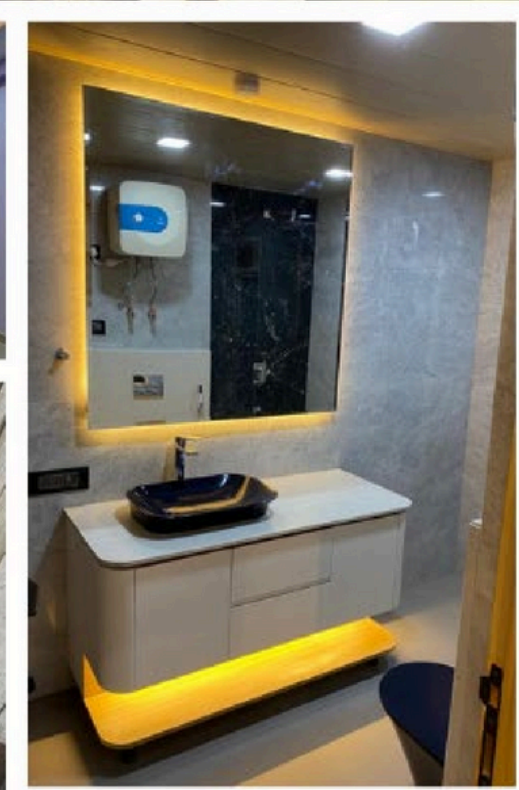
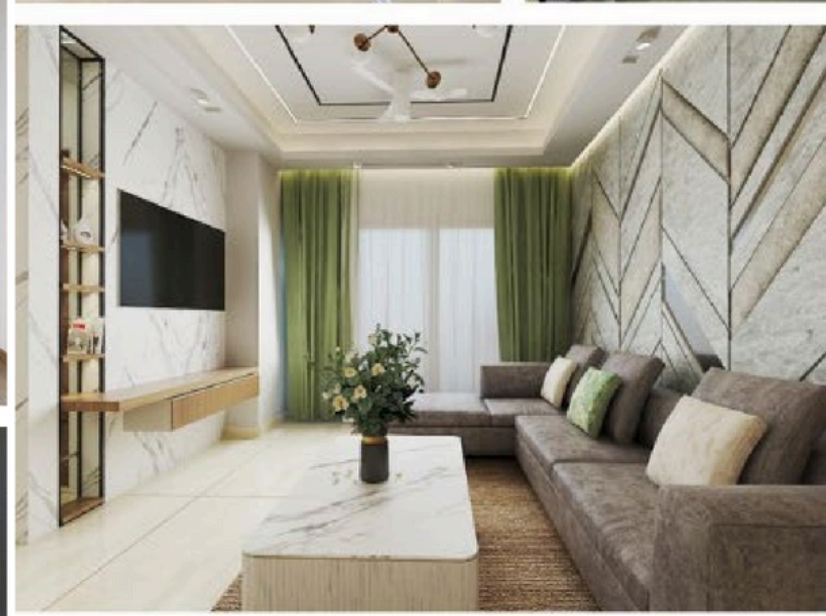
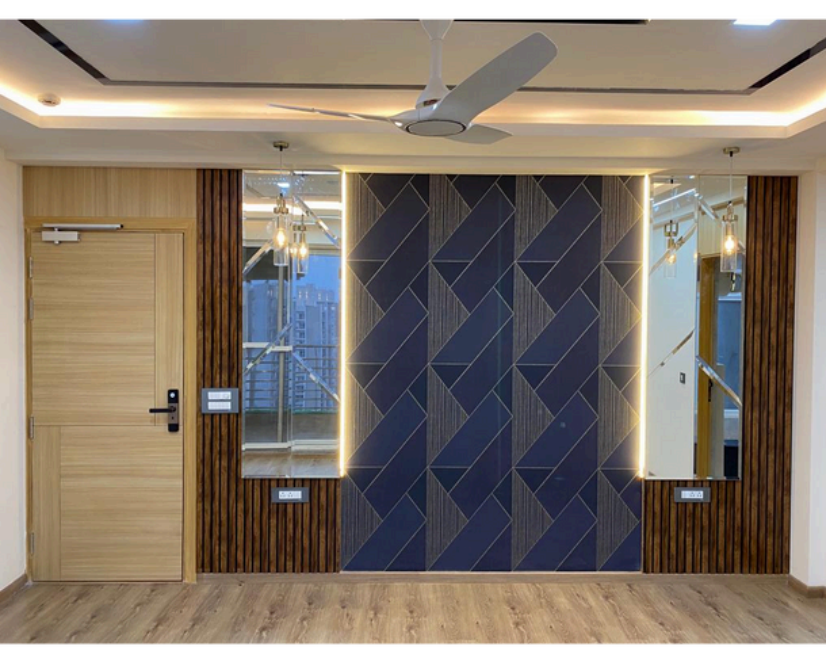
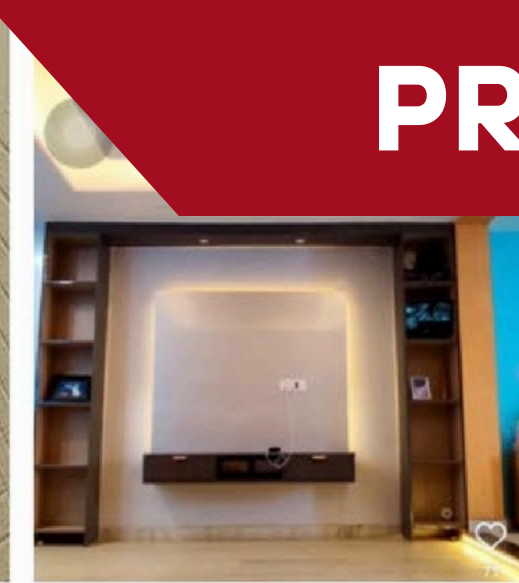


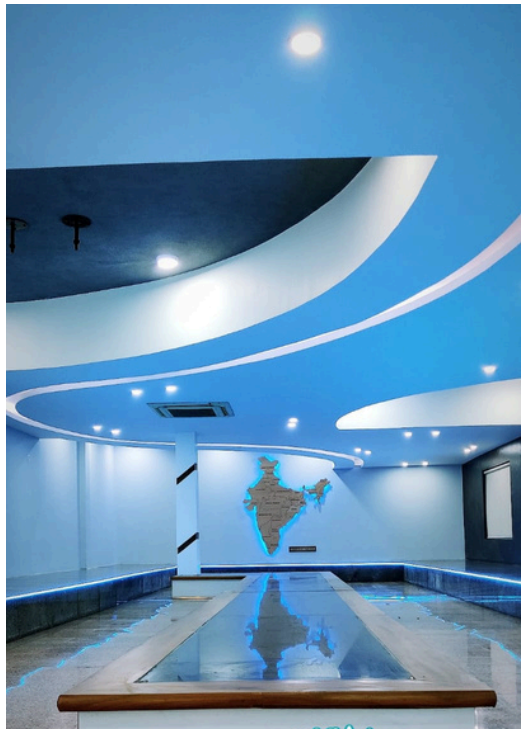
PROJECTS

Name of Client (Commercial)
Fair Wealth
kashyapi
Power Grid
Rail Vikas Nigam Limited
Sobha
SS Group
Honda ISR

Name of Client (Commercial)	Year
Tech Mahindra	2022-2023
Santosh Medical	2023
Flow More	2022- 2023
CPWD	2022-2023
Honda	working on
Honda ISR	Working on

PROJECTS





COMERCIAL

ARDOR STUDIOS

CONTACT US

Thank You!

Reach us through our socials



@ardorstudios



12/27, Sector 12, Vasundhara, Ghaziabad,
Uttar Pradesh 201012



09971225352



ardore@ardorstudios.in

www.ardorstudios.in